

Supplemental Instructions

Focus, zoom and lens shift adjustments using ProAssist

Introduction

With the **NP-PV800UL series of** projectors, please use the NEC **ProAssist** application software to display the projector's internal test patterns and adjust the lens (focus, zoom and lens shift).

These instructions describe the procedure for adjusting the focus, zoom and lens shift using ProAssist.

Please follow **steps 1 to 5** in these instructions and try out the various adjustments.

- With the NP-PV800UL series, the “Lens control” and “Correction of screen geometric distortion (Geometric Correction)” procedures can be performed using ProAssist.
- Refer to the user manual for instructions on operating ProAssist. The user manual is available in PDF format on the ProAssist website (the URL is on the following page).
- Prepare a LAN cable (category 5 or higher) to connect the computer to the projector.

Step 1: Installing ProAssist on the computer

Step 2: Connecting the computer and projector in a network

Step 3: Starting ProAssist and registering the projectors to be controlled

Step 4: Projecting test patterns with the projector

Step 5: Adjusting the focus, zoom and lens shift using ProAssist

- Compatible Projectors

NP-PV800UL-W / NP-PV800UL-B

NP-PV710UL-W / NP-PV710UL-B

- Compatible Lens Units

The possible ProAssist adjustment operations use the “Motorized” features.

Lens model name	NP11FL	NP12ZL	NP13ZL	NP14ZL	NP15ZL	NP40ZL	NP41ZL	NP43ZL	NP50ZL	NP44ML
Focus	Manual	Manual	Manual	Manual	Manual	Motorized	Motorized	Motorized	Motorized	Motorized
Focus of screen peripheral area	Manual					Motorized	Motorized			Motorized ^{*1}
Zoom		Manual	Manual	Manual	Manual	Motorized	Motorized	Motorized	Motorized	
Lens shift	Motorized ^{*2}	Motorized	Motorized	Motorized	Motorized	Motorized	Motorized	Motorized	Motorized ^{*3}	

*1: For the NP44ML, the peripheral focus is adjusted using the [ZOOM] buttons.

*2: Use the NP11FL in the home position. If necessary, fine-adjust the lens shift.

*3: For the NP50ZL, project the adjustment pattern (from a computer, for example) and use the buttons on either the remote control or the projector body to adjust the image position, image size and focus before using ProAssist. Next, after fastening the support kit in place, project the projector's internal test pattern and fine-adjust the focus using ProAssist.

Reference:

To perform lens adjustments (focus, zoom and lens shift) using the buttons on the remote control or the projector body without using ProAssist, do not use the projector's internal test patterns. Instead, make the adjustments projecting an image (your adjustment pattern) from a computer, etc., connected to the HDMI 1 IN Terminal, the HDMI 2 IN Terminal or the Ethernet/HDBaseT Port.

Step 1 Installing ProAssist on the Computer



ProAssist is compatible with the Windows 10 and 11 operating systems.

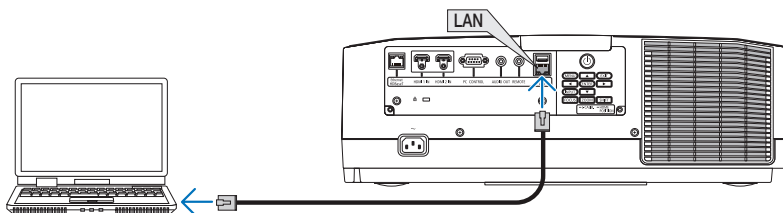
- 1 Access the site below using your computer's web browser and download the installer and user manual.

https://www.sharp-nec-displays.com/dl/en/pj_soft/proassist.html

- 2 Double-click the ProAssist installer, and install ProAssist on the computer.

Step 2 Connecting the Computer and Projector in a Network

- 1 Connect the computer's LAN port to the projector's LAN port using a LAN cable.



- 2 Turn on the projector's power, and at [NETWORK SETTINGS] on the on-screen menu, set [PROFILE] to [ENABLE].
Now make the appropriate settings for the network environment being used.

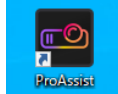
Step 3

Starting ProAssist and Registering the Projectors to be Controlled

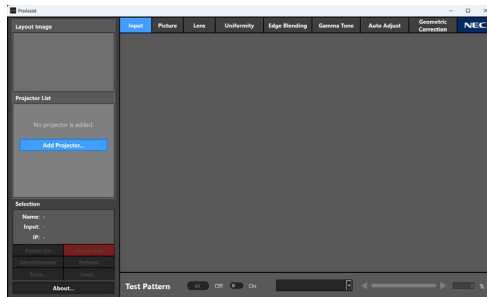
Refer to the user manual for details on operating.

1. Display the Projector registration screen.

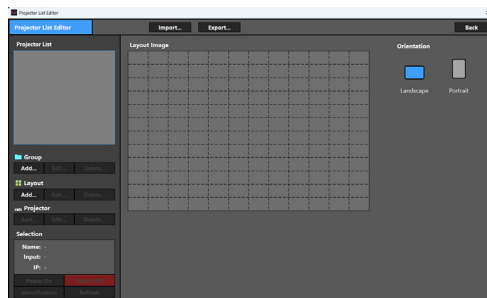
- 1 Double-click the ProAssist icon on the desktop.



When ProAssist is started up the first time, “No projector is added.” is displayed on the list of projectors on the left side of the screen.



- 2 Double-click the [Add Projector...] button.
The Projector List Editor screen is displayed.

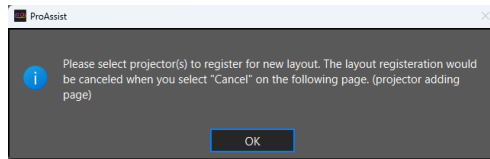


2. Register the Group.

- 1 Click the [Add...] button under “Group”.
The Add Group screen appears.
- 2 Enter the group name.
- 3 Click the OK button.
The group is registered and the Add Group screen closes.

3. Register the Layout.

- 1 Select the Group to register the Layout from the Projector List.
- 2 Click the “Add” button under “Layout”.
The Add Layout screen appears.
- 3 Enter the layout name.
- 4 Click the OK button.
The message below appears.



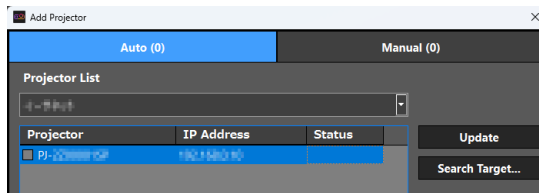
- 5 Click the OK button again.
The display switches to the projector registration screen.

4. Select the projector to register.

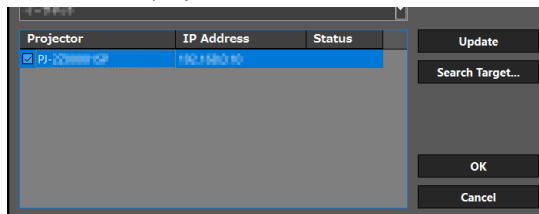
The projector to be registered can be automatically selected.

There is an [Auto] and a [Manual] tab at the top of the screen, and [Manual] is selected by default.

- 1 Click the “Auto” tab.
The projector connected by the LAN cable is displayed.

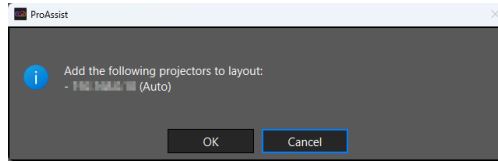


- 2 Check the checkbox for the projector.



5. Registering the projector.

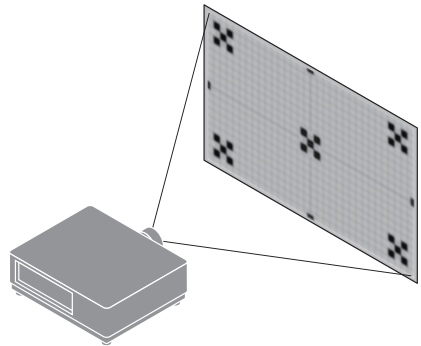
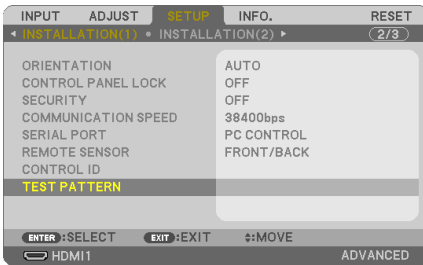
- 1 Click the OK button on the automatic selection screen.
A confirmation screen is displayed.



- 2 Click the OK button on the confirmation screen.
The screen returns to the Projector List Editor screen.
- 3 Click the [Back] button at the upper right of the screen.
The screen returns to the main ProAssist screen.

Step 4 Projecting Test Patterns with the Projector

- 1 From the on-screen menu, select [SETUP] → [INSTALLATION (1)] → [TEST PATTERN].



- 2 Use the ◀ and ▶ buttons on the remote control to switch between test patterns.
Press the EXIT button to turn the test pattern off.

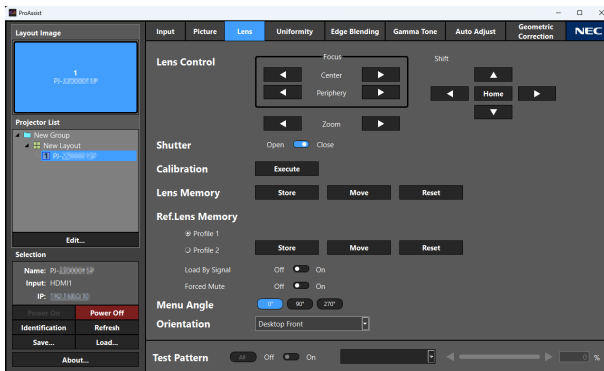
Reference:

- For the focus adjustment, we recommend projecting the test pattern for over 30 minutes before making the adjustment.
- When projecting the test pattern for an extended period of time, we recommend setting [SETUP] → [OPTIONS (2)] → [AUTO POWER OFF] on the on-screen menu to [OFF]. The factory defaults are [MODE:ON] and [TIME:60].

Step 5

Adjusting the Focus, Zoom and Lens Shift Using ProAssist

- 1 Click the [Lens] tab at the top of the screen.
Check that the projector is selected in the list of projectors on the left side of the screen. If not, click the projector to select it.
- 2 Use the ◀ and ▶ buttons for the focus and zoom.
Use the ▲, ▼, ◀ and ▶ buttons for the lens shift.
The adjustments are applied to the image projected by the projector.



Note

- For the NP43ZL, NP50ZL and NP44ML lens units, the [Periphery] focus cannot be adjusted. For the NP44ML, the peripheral focus is adjusted using the [Zoom] buttons.
- For the NP44ML lens unit, the zoom and lens shift cannot be adjusted.
- For the NP50ZL lens unit, the lens shift cannot be adjusted.
- Depending on your projector, it may not be possible to use some of the functions.