



## Setup Manual

- NOTE:** This product can only be serviced in the country where it was purchased.
- The contents of this manual may not be reprinted in part or whole without permission.
  - The contents of this manual are subject to change without notice.
  - Great care has been taken in the preparation of this manual; however, should you notice any questionable points, errors or omissions, please contact us.
  - The image shown in this manual is indicative only. If there is inconsistency between the image and the actual product, the actual product shall govern.
  - Notwithstanding articles (3) and (4), we will not be responsible for any claims on loss of profit or other matters deemed to result from using this device.
  - This manual is commonly provided to all regions so they may contain descriptions that are pertinent for other countries.

## 2. Installation

*Product warranty does not cover damage caused by improper installation. Failure to follow these recommendations could result in voiding the warranty.*

**WARNING:** Please refer to the "Important Information".

- We recommend four or more people.
- Four handles are required when transporting.
- CAUTION:** Avoid locations with extreme temperatures and humidity. The usage environment for this monitor is as follows. Failure to do so could damage to the product or lead to fire or electric shock.

- The operating temperature: 0 °C to 40 °C/32 °F to 104 °F/ humidity: 20 to 80% (without condensation)
- The storage temperature: -20 °C to 60 °C/-4 °F to 140 °F/ humidity: 10 to 90% (without condensation)

1. Install the remote control batteries
2. Connect external equipment

**CAUTION:** Use the provided specified cables with this product so as not to interfere with radio and television reception.

For USB and mini D-Sub 15-pin, please use a shielded signal cable with ferrite core. For HDMI and RS-232C, please use a shielded signal cable. Use of other cables and adapters may cause interference with radio and television reception.

**NOTE:** Adjustment of the volume control as well as the equalizer to other settings than the center position may increase the ear-headphones output voltage and therefore the sound pressure level.

3. Connect the supplied power cord
4. Turn on the power for the monitor and the external equipment

Switch on the monitor power first.

**NOTE:** Remember to save your original box and packing material to transport or ship the monitor.

## FCC Information

**CAUTION:** Use the provided specified cables with this product so as not to interfere with radio and television reception.

For USB and mini D-Sub 15-pin, please use a shielded signal cable with ferrite core. For HDMI and RS-232C, please use a shielded signal cable. Use of other cables and adapters may cause interference with radio and television reception.

**WARNING:** The Federal Communications Commission does not allow any modifications or changes to the unit EXCEPT those specified by Sharp NEC Display Solutions of America, Inc. in this manual. Failure to comply with this government regulation could void your right to operate this equipment.

This equipment has been tested and found to comply with the limits for a Class B digital device, pursuant to part 15 of the FCC Rules. These limits are designed to provide reasonable protection against harmful interference in a residential installation. This equipment generates, uses, and can radiate radio frequency energy, and, if not installed and used in accordance with the instructions, may cause harmful interference to radio communications.

However, there is no guarantee that interference will not occur in a particular installation. If this equipment does cause harmful interference to radio or television reception, which can be determined by turning the equipment off and on, the user is encouraged to try to correct the interference by one or more of the following measures:

- Reorient or relocate the receiving antenna.
- Increase the separation between the equipment and receiver.
- Connect the equipment into an outlet on a circuit different from that to which the receiver is connected.
- Consult your dealer or an experienced radio/TV technician for help.

If necessary, the user should contact the dealer or an experienced radio/television technician for additional suggestions.

The user may find the following booklet, prepared by the Federal Communications Commission, helpful: "How to Identify and Resolve Radio-TV Interference Problems." This booklet is available from the U.S. Government Printing Office, Washington, D.C., 20462, Stock No. 004-000-00345-4.

## SUPPLIER'S DECLARATION OF CONFORMITY

This device complies with Part 15 of the FCC Rules. Operation is subject to the following two conditions. (1) This device may not cause harmful interference, and (2) this device must accept any interference received, including interference that may cause undesired operation.

**U.S. Responsible Party:** Sharp NEC Display Solutions of America, Inc.  
**Address:** 3250 Lacey Rd, Ste 500  
 Downers Grove, IL 60515  
 (630) 467-3000

**Type of Product:** LCD Monitor  
**Equipment Classification:** Class B Peripheral  
**Model:** E758, E868

**CE** **UK** **CA**

**(For Customers in U.K.)**

**IMPORTANT**

The wires in this mains lead are coloured in accordance with the following code:

**GREEN-AND-YELLOW:** "Earth"  
**BLUE:** "Neutral"  
**BROWN:** "Live"

As the colours of the wires in the mains lead of this apparatus may not correspond with the coloured markings identifying the terminals in your plug proceed as follows:

- The wire which is coloured GREEN-AND-YELLOW must be connected to the terminal in the plug which is marked by the letter E or by the safety earth symbol or coloured green or green-and-yellow.
- The wire which is coloured BLUE must be connected to the terminal which is marked with the letter N or coloured black.
- The wire which is coloured BROWN must be connected to the terminal which is marked with the letter L or coloured red.

Ensure that your equipment is connected correctly. If you are in any doubt consult a qualified electrician.

**"WARNING: THIS APPARATUS MUST BE EARTHED."**

**IMPORTANT**

1. The wires in this mains lead are coloured in accordance with the following code:

**GREEN-AND-YELLOW:** "Earth"  
**BLUE:** "Neutral"  
**BROWN:** "Live"

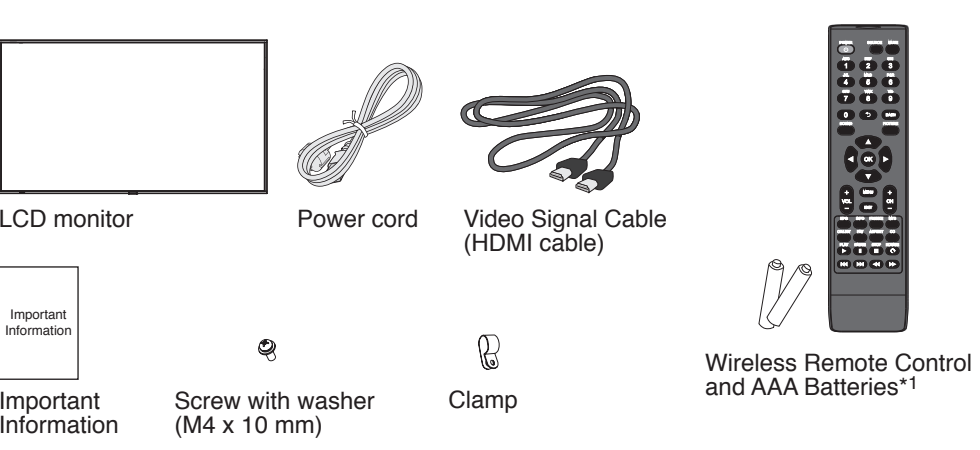
As the colours of the wires in the mains lead of this apparatus may not correspond with the coloured markings identifying the terminals in your plug proceed as follows:

- The wire which is coloured GREEN-AND-YELLOW must be connected to the terminal in the plug which is marked by the letter E or by the safety earth symbol or coloured green or green-and-yellow.
- The wire which is coloured BLUE must be connected to the terminal which is marked with the letter N or coloured black.
- The wire which is coloured BROWN must be connected to the terminal which is marked with the letter L or coloured red.

Ensure that your equipment is connected correctly. If you are in any doubt consult a qualified electrician.

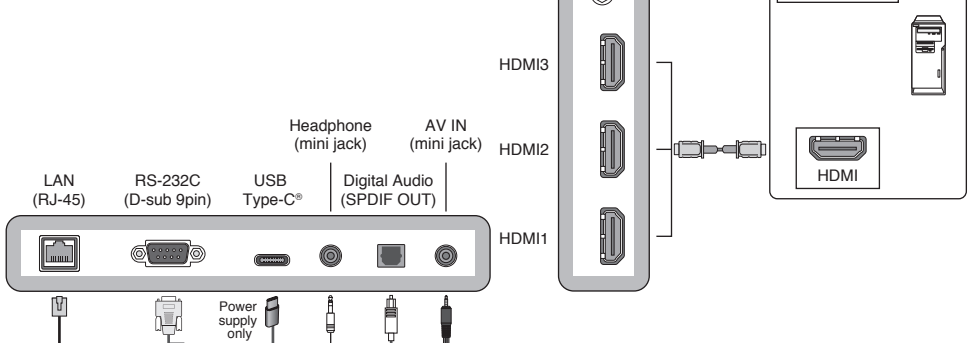
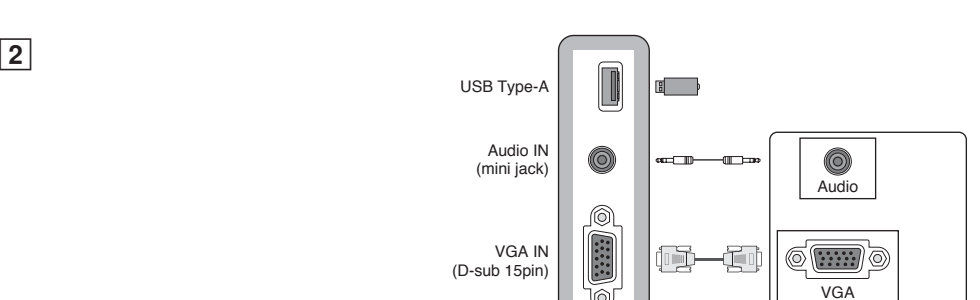
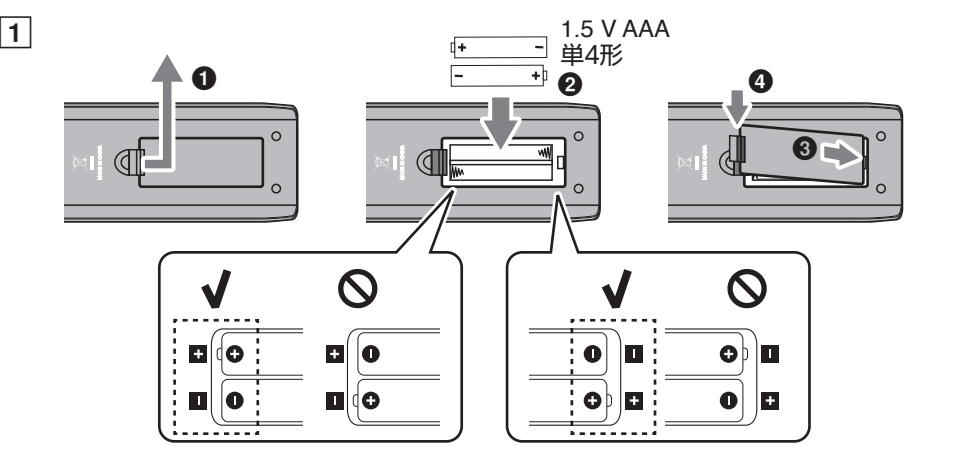
**"WARNING: THIS APPARATUS MUST BE EARTHED."**

## 1. Contents



\*1 Depending on the country where the LCD monitor is shipped to, AAA batteries are not included in the box contents.

## 2. Installation



**NOTE:** Adjustment of the volume control as well as the equalizer to other settings than the center position may increase the ear-headphones output voltage and therefore the sound pressure level.

3. Connect the supplied power cord
4. Turn on the power for the monitor and the external equipment

Switch on the monitor power first.

**NOTE:** Remember to save your original box and packing material to transport or ship the monitor.

**CAUTION:** Use the provided specified cables with this product so as not to interfere with radio and television reception.

For USB and mini D-Sub 15-pin, please use a shielded signal cable with ferrite core. For HDMI and RS-232C, please use a shielded signal cable. Use of other cables and adapters may cause interference with radio and television reception.

**WARNING:** The Federal Communications Commission does not allow any modifications or changes to the unit EXCEPT those specified by Sharp NEC Display Solutions of America, Inc. in this manual. Failure to comply with this government regulation could void your right to operate this equipment.

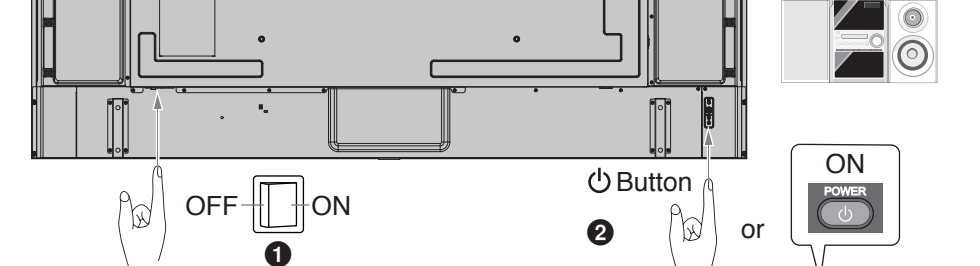
This equipment has been tested and found to comply with the limits for a Class B digital device, pursuant to part 15 of the FCC Rules. These limits are designed to provide reasonable protection against harmful interference in a residential installation. This equipment generates, uses, and can radiate radio frequency energy, and, if not installed and used in accordance with the instructions, may cause harmful interference to radio communications.

However, there is no guarantee that interference will not occur in a particular installation. If this equipment does cause harmful interference to radio or television reception, which can be determined by turning the equipment off and on, the user is encouraged to try to correct the interference by one or more of the following measures:

- Reorient or relocate the receiving antenna.
- Increase the separation between the equipment and receiver.
- Connect the equipment into an outlet on a circuit different from that to which the receiver is connected.
- Consult your dealer or an experienced radio/TV technician for help.

If necessary, the user should contact the dealer or an experienced radio/television technician for additional suggestions.

The user may find the following booklet, prepared by the Federal Communications Commission, helpful: "How to Identify and Resolve Radio-TV Interference Problems." This booklet is available from the U.S. Government Printing Office, Washington, D.C., 20462, Stock No. 004-000-00345-4.



**NOTE:** Adjustment of the volume control as well as the equalizer to other settings than the center position may increase the ear-headphones output voltage and therefore the sound pressure level.

3. Connect the supplied power cord
4. Turn on the power for the monitor and the external equipment

Switch on the monitor power first.

**NOTE:** Remember to save your original box and packing material to transport or ship the monitor.

**CAUTION:** Use the provided specified cables with this product so as not to interfere with radio and television reception.

For USB and mini D-Sub 15-pin, please use a shielded signal cable with ferrite core. For HDMI and RS-232C, please use a shielded signal cable. Use of other cables and adapters may cause interference with radio and television reception.

**WARNING:** The Federal Communications Commission does not allow any modifications or changes to the unit EXCEPT those specified by Sharp NEC Display Solutions of America, Inc. in this manual. Failure to comply with this government regulation could void your right to operate this equipment.

This equipment has been tested and found to comply with the limits for a Class B digital device, pursuant to part 15 of the FCC Rules. These limits are designed to provide reasonable protection against harmful interference in a residential installation. This equipment generates, uses, and can radiate radio frequency energy, and, if not installed and used in accordance with the instructions, may cause harmful interference to radio communications.

However, there is no guarantee that interference will not occur in a particular installation. If this equipment does cause harmful interference to radio or television reception, which can be determined by turning the equipment off and on, the user is encouraged to try to correct the interference by one or more of the following measures:

- Reorient or relocate the receiving antenna.
- Increase the separation between the equipment and receiver.
- Connect the equipment into an outlet on a circuit different from that to which the receiver is connected.
- Consult your dealer or an experienced radio/TV technician for help.

If necessary, the user should contact the dealer or an experienced radio/television technician for additional suggestions.

The user may find the following booklet, prepared by the Federal Communications Commission, helpful: "How to Identify and Resolve Radio-TV Interference Problems." This booklet is available from the U.S. Government Printing Office, Washington, D.C., 20462, Stock No. 004-000-00345-4.

## Ръководство за настройка

**ЗАБЕЛЕЖКА:** Този продукт може да се ремонтира само в страната, в която е купен.

- Съдържанието на това ръководство не може да се пренаточва, частично или изцяло, без предварително разрешение.
- Съдържанието на това ръководство може да бъде променено без предизвестие.
- При подготовката на това ръководство са погледнати големи грешки, обаче ако забележите някакви съществени грешки, грешки или пропуски в него, свържете се с нас.
- Изображенията, показани в това ръководство, са само ориентировъчни. Ако има несъответствие между изображението и действителния продукт, решението трябва да се вземе за меродавно.
- Независимо от членовете (3) и (4), ние няма да носим отговорност за изкове за пропусната печалба или други вреди, за които се счита, че са резултат от използването на този уред.
- Това ръководство обхваща се предоставя за всички региони, така че може да съдържа описания, които се отнасят за други държави.

## 1. Съдържание

\*1 В зависимост от страната, в която се доставя LCD мониторът, батериите AAA не са включени в съдържанието на кутията.

## 2. Мониторане

*Гарантията на продукта не покрива щети, причинени от неправилна инсталация. Неспазването на тези препоръки може да доведе до вливане на гаранцията.*

**ПРЕДУПРЕЖДЕНИЕ:** Моля, вижте „Важна информация“

- Не препоръчваме четири или повече души.
- За транспортиране се изискват четири държачи.

**ВНИМАНИЕ:** Избягвайте монитора с екстремни температури и влажност. Средата на използване на този монитор е посочена по-долу. Ако не го направите, това може да доведе до токов удар или повреда на продукта.

- Работна температура: 0 °C – 40 °C/32 °F – 104 °F/ влажност: 20 – 80% (без кондензация)
- Температура на съхранение: -20 °C – 60 °C/-4 °F – 140 °F/ влажност: 10 – 90% (без кондензация)

1. Поставяне на батерии в дистанционното
2. Съвързване на външно оборудване

**ВНИМАНИЕ:** Избягвайте предоставените описани кабели с този продукт, за да не се повреди или повреди радиото и телевизионни програми.

За USB, моля, използвайте екранирани сигнални кабели с феритна сърцевина. За HDMI и RS-232C, моля, използвайте екранирани сигнални кабели. Използването на други кабели и адаптери може да пренесе ситуация в приеманите радио и телевизионни програми.

3. Свържете предоставения захранващ кабел
4. Включете захранването на монитора и външното оборудване

Първо включете захранването на монитора.

**ЗАБЕЛЕЖКА:** Не забравяйте да запазите оригиналната кутия и материала за опаковката, за транспортиране или изпращане на монитора.

## Instalační příručka

**POZNÁMKA:** Tento produkt může být opravován pouze v zemi, kde byl zakoupen.

- Obsah této uživatelské příručky jistě zcela není jen o deseti nesmí být bez svolení reprodukovány.
- Obsah této uživatelské příručky se může bez předchozího upozornění změnit.
- Přípravě této uživatelské příručky byla věnována značná pozornost. Pokud byste přesto objevili jakékoli správné body, chyby nebo opomenutí, kontaktujte nás.
- Obrazky a texty v této příručce jsou pouze orientační. Pokud mezi obrázkem a skutečným produktem existuje nějaký rozdíl, skutečný produkt má přednost.
- Bez ohledu na články (3) a (4) neneseme odpovědnost za případné nárokování ušlého zisku ani za jiné škody, za které se považuje, že jsou výsledkem použití tohoto zařízení.
- Tato příručka je běžně poskytována ve všech oblastech, takže může obsahovat popisy, které se týkají jiných zemí.

## 1. Obsah

\*1 V závislosti na místě určení LCD monitoru nemusí krabice obsahovat baterie AAA.

**POZNÁMKA:** Tento produkt může být opravován pouze v zemi, kde byl zakoupen.

- Obsah této uživatelské příručky jistě zcela není jen o deseti nesmí být bez svolení reprodukovány.
- Obsah této uživatelské příručky se může bez předchozího upozornění změnit.
- Přípravě této uživatelské příručky byla věnována značná pozornost. Pokud byste přesto objevili jakékoli správné body, chyby nebo opomenutí, kontaktujte nás.
- Obrazky a texty v této příručce jsou pouze orientační. Pokud mezi obrázkem a skutečným produktem existuje nějaký rozdíl, skutečný produkt má přednost.
- Bez ohledu na články (3) a (4) neneseme odpovědnost za případné nárokování ušlého zisku ani za jiné škody, za které se považuje, že jsou výsledkem použití tohoto zařízení.
- Tato příručka je běžně poskytována ve všech oblastech, takže může obsahovat popisy, které se týkají jiných zemí.

1. Vložte baterie do dálkového ovládacího
2. Připojte externí zařízení

**POZNÁMKA:** Používejte pouze dodávané předepsané kabely, jinak může docházet k rušení příjmu rozhlasového a televizního signálu.

V případě konektů USB a mini D-Sub 15, použijte stíněný signálový kabel s feritovým jádrem. U rozhraní HDMI a RS-232C používejte pouze stíněný signálový kabel. Jiné kabely a adaptéry mohou při používání rušit rozhlasový a televizní signál.

3. Připojte dodaného napájecího kabelu
4. Zapnutí napájení monitoru a externího zařízení

Nejprve zapněte monitor.

**POZNÁMKA:** Původní krabici a balicí materiál si uschovejte pro případnou přípravu monitoru.

## Опærтningsvejledning

**BEMLÆK:** Dette produkt kan kun servicees i det land, hvor det er købt.

- Indholdet af denne brugsvejledning bør ikke kopieres delvist eller helt uden tilladelse.
- Indholdet af denne brugsvejledning kan ændres uden varsel.
- Denne brugsvejledning er omhyggeligt udarbejdet; kontakt os dog, hvis du opdager tvivlsomme punkter, fejl eller udeladelser.
- Billedet, der vises i denne brugsvejledning, er kun vejledende. Hvis der er uoverensstemmelse mellem billedet og den reelle produkt, skal selve produktet følges.
- Uanset artiklerne (3) og (4) er vi ikke ansvarlige for eventuelle krav om tabt fortjeneste eller andre forløb, der vurderes at være grundet brugen af denne enhed.
- Denne brugsvejledning formidles ofte til alle regioner, så den kan indeholde beskrivelser, der gælder for andre lande.

## 1. Indhold

\*1 Afhængigt af det land, hvor LCD-skærmen sendes til, medfølger AAA-batterier ikke i æskeens indhold.

## 2. Installation

*Produktgaranti dækker ikke beskadigelse forårsaget af ukorrekt installation. Manglende overholdelse af disse anbefalinger kan resultere i at garantien ugyldiggøres.*

**ADVARSEL:** Se "Vigtig information".

- Vi anbefaler fire personer eller flere.
- Fire håndtag er nødvendige ved transport.

**FORSIGTIG:** Undgå steder med ekstreme temperaturer og høj luftfugtighed. Brugsmiljøet for denne skærm er følgende. Mangel på at gøre dette kan forårsage brand eller elektrisk stød og produktskade.

- Driftstemperatur: 0 °C til 40 °C/32 °F til 104 °F/ luftfugtighed: 20 til 80 % (uden kondensat)
- Opbevaringstemperatur: -20 °C til 60 °C/-4 °F til 140 °F/ luftfugtighed: 10 til 90 % (uden kondensat)

1. Installer batterierne til fjernbetjeningen
2. Tilslut eksternt udstyr

**FORSIGTIG:** Brug de medføjede, specificerede kabler med dette produkt for at undgå interferens med radio- og tv-modtagelse. Til USB og mini D-Sub 15-stikben, brug venligst et afskærmnings signalkabel med ferritkern.

Til HDMI og RS-232C, brug et skærmnet signalkabel. Brug af andre kabler og adapterer kan forårsage interferens med radio- og tv-modtagelse.

3. Tilslut den medfølgende strømledning
4. Tænd for strømmen til skærmen og det eksterne udstyr

Tænd for strømmen i skærmens først.

**BEMLÆK:** Husk at gemme din originale æske og emballagematerialer til transport eller forsendelse af skærmen.

## Registration Information

Microsoft® and Windows® are either registered trademarks or trademarks of Microsoft Corporation in the United States and/or other countries.

The terms HDMI, HDMI High-Definition Multimedia Interface, HDMI Trade Dress and the HDMI Logos are trademarks or registered trademarks of HDMI Licensing Administrator, Inc. Manufactured under license from Dolby Laboratories. Dolby, Dolby Audio, Pro Logic, and the double-D symbol are trademarks of Dolby Laboratories Licensing Corporation.

NaViSet is a trademark or registered trademark of Sharp NEC Display Solutions, Ltd. in Japan and other countries.

CHESTRON and CHESTRON ROOMVIEW are trademarks or registered trademarks of Crestron Electronics, Inc. in the United States and other countries.

Blu-ray is a trademark of Blu-ray Disc Association. USB Type-C® and USB-C® are registered trademarks of USB Implementers Forum. All other brands and product names are trademarks or registered trademarks of their respective owners.

**Dolby Audio** **HDMI**

## Installationsanleitung

**HINWEIS:** Für diese Produkt wurde Kunden-Einstellungen nur in dem Land angeboten, in dem Sie gekauft haben.

- Der Inhalt dieses Handbuchs darf ohne entsprechende Genehmigung weder ganz noch teilweise nachgedruckt werden.
- Der Inhalt dieses Handbuchs kann jederzeit ohne vorherige Ankündigung geändert werden.
- Dieses Handbuch wurde mit größter Sorgfalt erstellt. Sollten Ihnen jedoch Unklarheiten, Fehler oder Auslassungen auffallen, kontaktieren Sie uns bitte.
- Die Abbildungen in diesem Handbuch dienen zur Veranschaulichung. Bei Abweichungen zwischen den Abbildungen und dem eigentlichen Produkt ist das eigentliche Produkt maßgeblich.
- Ungeachtet der Absätze (3) und (4) akzeptieren wir keinerlei Forderungen aufgrund entgangener Gewinns oder anderer Umsätze, die denen behauptet wird, dass diese auf die Verwendung dieses Geräts zurückzuführen sind.
- Dieses Handbuch wird generell für alle Regionen zur Verfügung gestellt, sodass sie Beschreibung enthalten können, die für andere Länder gelten.

## 1. Inhalt

\*1 Je nach dem Land, in das der LCD-Monitor verschickt wird, sind keine AAA-Batterien im Packingsinhalt enthalten.

## 2. Installation

*Die Produktgarantie deckt durch unsachgemäße Installation entstandene Schäden nicht ab. Die Nichtbeachtung dieser Empfehlungen kann zum Erlöschen Ihres Garantieanspruchs führen.*

**WARNING:** Weitere Informationen finden Sie unter „Wichtige Informationen“.

- Wir empfehlen mindestens vier Personen.
- Beim Transport werden 4 Griffe benötigt.

**VORSICHT:** Vermeiden Sie Aufstellorte mit extremer Temperatur oder Feuchtigkeit. Der Monitor ist auf folgende Umgebungsbedingungen ausgelegt. Ein Nichtbeachten kann zu Feuer, Stromschlag oder Beschädigung am Produkt führen.

- Betriebstemperatur: 0 °C bis 40 °C/32 °F bis 104 °F/ Feuchtigkeit: 20 bis 80 % (ohne Kondensation)
- Lagertemperatur: -20 °C bis 60 °C/-4 °F bis 140 °F/ Feuchtigkeit: 10 bis 90 % (ohne Kondensation)

1. Legen Sie die Batterien in die Fernbedienung ein.
2. Schließen Sie externe Geräte an.

**VORSICHT:** Verwenden Sie die mitgelieferten bzw. angegebenen Kabel mit diesem Produkt, um Störungen des Rundfunk- bzw. Fernsehempfangs zu vermeiden.

Verwenden Sie für USB und mini D-Sub 15-pin HDMI und RS-232C-Anschluss ein abgeschirmtes Signalkabel mit einem Ferritkern. Verwenden Sie für HDMI und RS-232C ein abgeschirmtes Signalkabel. Die Verwendung anderer Kabel und Adapter kann zu Störungen des Rundfunk- und Fernsehempfangs führen.

**HINWEIS:** Eine Einstellung des Lautstärkereglers und des Equalizers auf andere als von der Mittelstellung vorgegebene Einstellungen kann die Ausgangsspannung am Ohr-Kopfhoerungsausgang und damit auch den Schalldruckpegel erhöhen.

3. Schließen Sie das mitgelieferte Netzkabel an.
4. Schalten Sie den Monitor und die externen Geräte ein.

Schalten Sie zuerst den Monitor ein.

**HINWEIS:** Bewahren Sie den Originalkarton und das Verpackungsmaterial für spätere Transporte des Monitors auf.

## Εγχειρίδιο εγκατάστασης

**ΣΗΜΕΙΩΣΗ:** Αυτό το προϊόν μπορεί να επικοινωνήσει μόνο στη χώρα αγοράς.

- Δεν επιτρέπεται η αντιστροφή του παρόντος εγχειρίδιου, μερικής ή εξ ολοκλήρου, χωρίς άδεια.
- Το παρόν εγχειρίδιο του παρόντος εγχειρίδιου υπενθυμίζει σε άλλους χωρίς ειδοποίηση.
- Εάν δοθεί μεγάλη έμφαση, είναι απαραίτητο να χρησιμοποιηθεί το παρόν εγχειρίδιο. Όσοι παρατηρήσει τυχόν αμφιβολία, λάθη ή παραβλέψει, παρακαλούμε επικοινωνήστε μαζί μας.
- Εάν δοθεί μεγάλη έμφαση, είναι απαραίτητο να χρησιμοποιηθεί το παρόν εγχειρίδιο. Όσοι παρατηρήσει τυχόν αμφιβολία, λάθη ή παραβλέψει, παρακαλούμε επικοινωνήστε μαζί μας.
- Εάν δοθεί μεγάλη έμφαση, είναι απαραίτητο να χρησιμοποιηθεί το παρόν εγχειρίδιο. Όσοι παρατηρήσει τυχόν α



